



LOCK-TITE™ LINER SYSTEMS

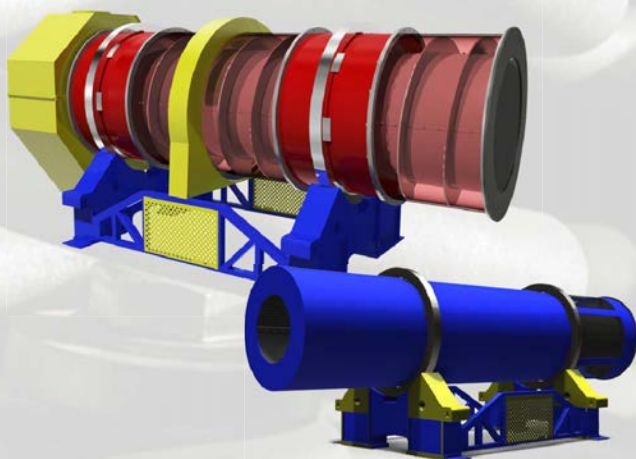
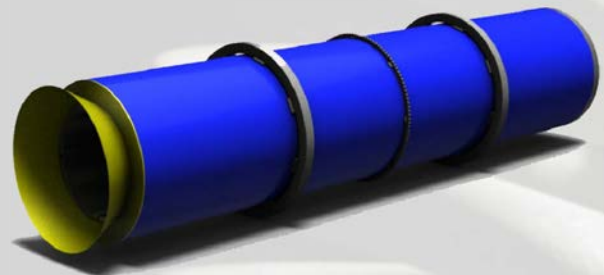
Do you have a rotary drum in your foundry that is showing its age, but are not ready to purchase a new one? Look to GK Parts to repair and upgrade your existing rotary drum!

GK's patent pending LOCK-TITE™ rotary drum liner system is designed to upgrade existing rotary products that utilize a cast inner shell for processing and an outer chamber for material return. The completely modular system begins with a rolled AR shell to your diameter specifications. Inside, liners are held in place with clamp bars to the skin of the drum. Each row of LOCK-TITE™ liners are inserted into the drum, clamped on one end, and drum is rotated 90 degrees for the next liner. Dangerous installation and expanders are eliminated.

Expected installation requirements are limited to a 2 or 3 man crew with a forklift (and boom) and impact wrench for an expected changeout time of approximately one to two shifts, allowing replacement to take place over a weekend.

No More Cast Grid Headaches!

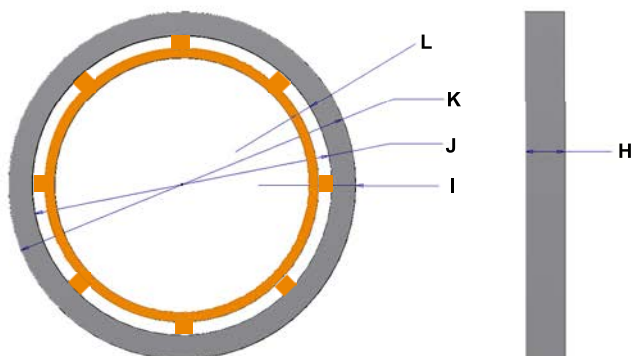
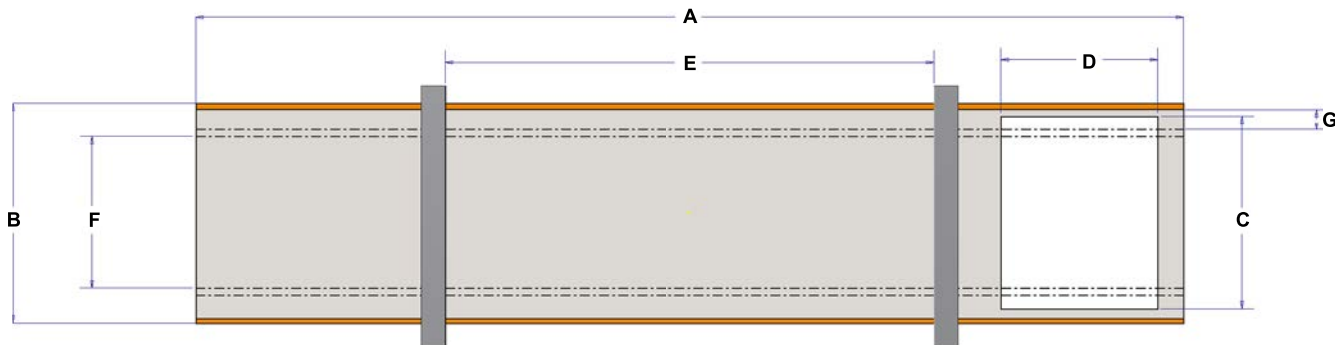
With providing the liner in quadrants, there is no need to replace broken or damaged individual cast liners. In competitive drums, removal of all plates and replacement is required. White cast iron liners from the competition are also not weldable, making repairs impossible. With the GK Parts LOCK-TITE™ liners, should an area require repair, patch plates are easy to locate and weld in place directly to the liner.



Ask GK Parts about our other rotary drum replacement part capabilities:
Bearings, Chains, Thrust Wheels, Trunnions, Drives, Frames, and more!



Replacement Drum Body Worksheet



Model Information:

Serial: _____
 Date Installed: _____
 Model Size: _____
 Model Type:
 Media Drum
 Shakeout
 Sprue Drum
 Other _____

Rates:

Tons / Hr.: _____
 Sand Ratio: _____
 Metal Ratio: _____

Drive Information:

Gear Pitch: _____
 Chain Type: _____
 Chain P/N: _____

Body Dimensions:

Body Length (A): _____
 Drum Diameter (B): _____
 Screen Opening Height (C): _____
 Screen Opening Width (D): _____
 Distance Between Wheels (E): _____
 Liner Diameter (F): _____
 Distance Between Liner and Body (G): _____

Wheel Dimensions:

Wheel Width (H): _____
 Wheel Height (I): _____
 Inner Diameter (J): _____
 Outer Diameter (K): _____
 Distance Between Drum and Ring (L): _____

**Other Application Information
or Machine Notes:**

Please email or fax completed worksheet, pictures of existing drum, and other information to:

Email: CompSalesGroup@generalkinematics.com Fax: 815-455-2285