



SHOT BLAST SYSTEMS

More than just conveying

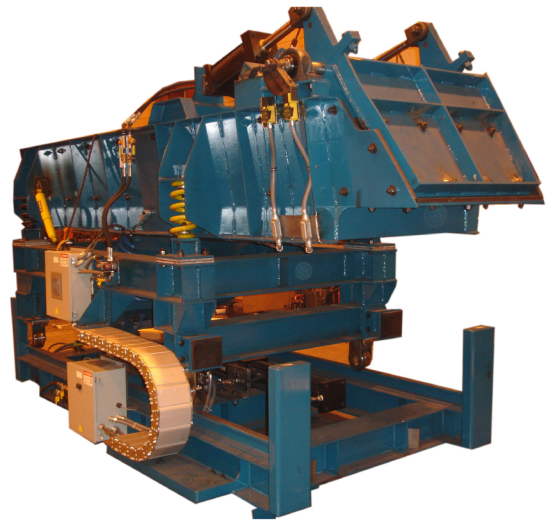
Versatile vibratory conveyors by General Kinematics do more than just move materials. The inherent motion of continuously moving and throwing material forward creates the opportunity to perform one or more processes along the way.

Blast load feeders offer unparalleled flexibility in system design and efficiency. Vibrating blast load feeders can be designed to index forward, backward, up, down and side to side, as well as convey material in multiple directions. Optional automated gates, weigh cells, and other options allow you to precisely monitor and feed multiple shot blast machines with a single vibratory unit. Rail mounted feeders can index to each shot blast machine and feed material, then return to an accumulating feeder for the next material batch.

Blast Systems include:

- Weighing & Accumulating Batch Feeders
- Index & Traverse Charge Feeders
- Blast Discharge Conveyors
- Controls
- Two-Way Feeders for casting distribution
- Shot Collection / Reclamation

Two-Way Blast Charge Feeder



Index & Traverse Charge Feeder

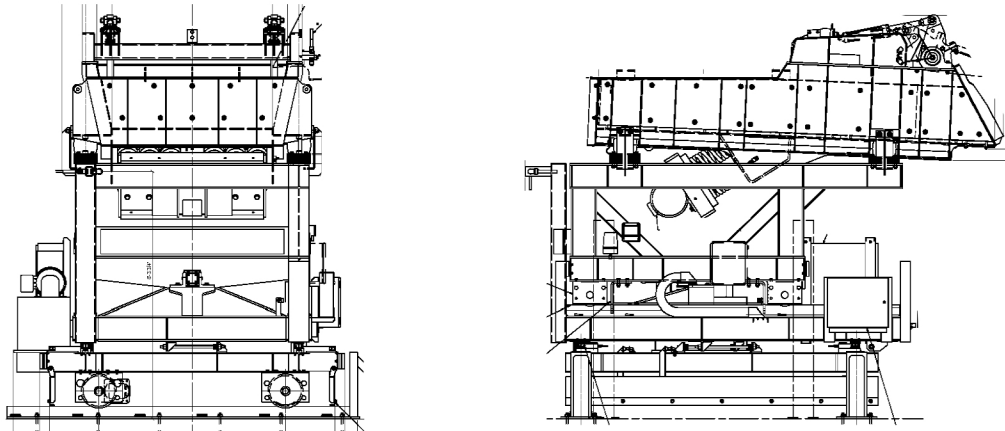


Lifting Charge Feeder



Blast Unload Conveyor

CAD Example



Specs

Function:	Automating Blast Charge Operation
Components:	Electric Motors, Isolation Springs, Reactor Springs, Steel Construction, Liners
Construction Material:	Abrasion Resistant Steel, Steel, Rubber, Stainless Steel
Power Requirements:	Up to (2) 10 HP (7.5 kW)
Width / Lg:	Designed per Application
Length:	Designed per application
Batch Sizes:	Up to 12 tons
Analysis:	Fatigue, FEA, Stress
Production Volume:	Built to Order
Benefits:	Efficient, Low Maintenance, Reliable, Rugged, Safe Operation, Large Processing Rates
Secondary Services:	Customer Support, Field Service, Additional Features, Stroke Monitoring
Quality:	ISO Certified

Application Photos

