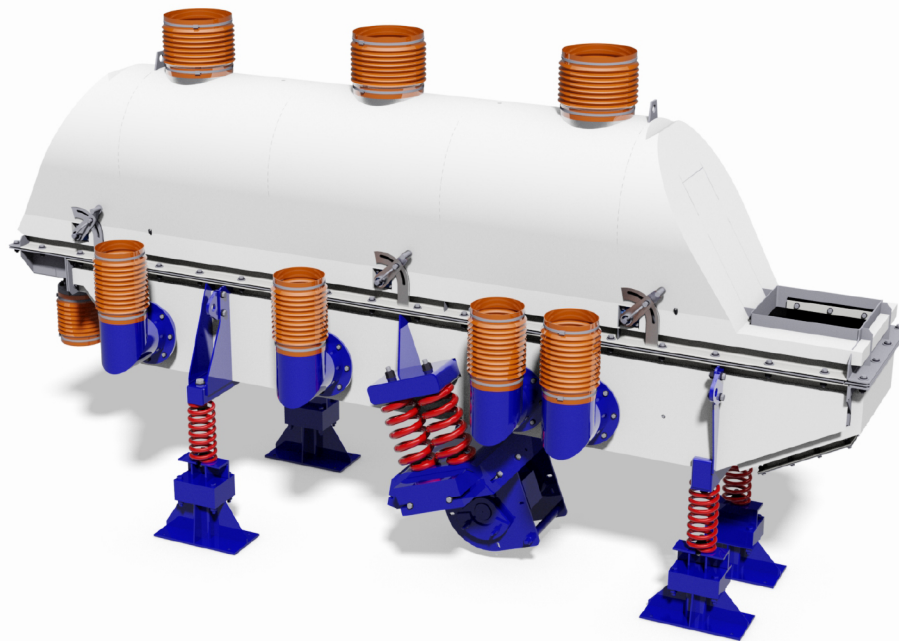




Fluidized Bed Processing Units



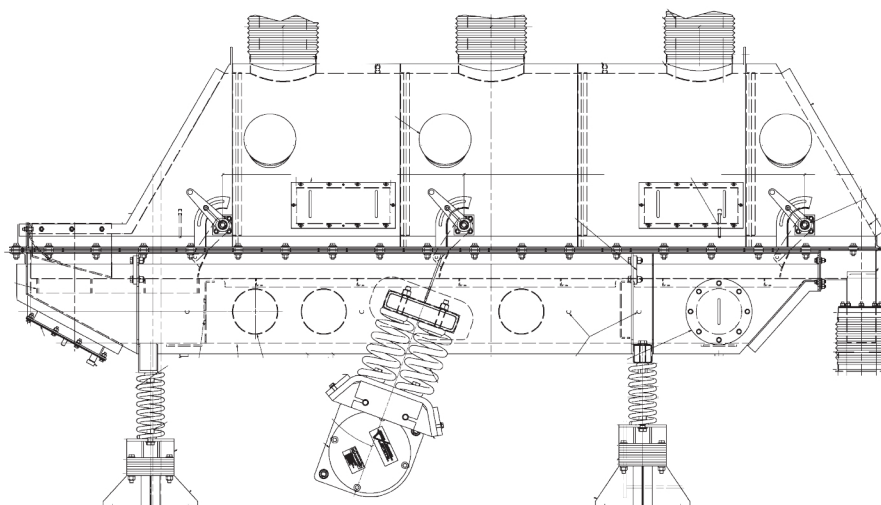
Innovative fluidized bed processing system features adjustable retention time

General Kinematics experience in vibratory equipment is used in many processes. GK's fluidized bed processing units feature an innovative drive system with Two-Mass motorized drive controls which maintain motion. Remote electrical or pneumatic control varies the peak to peak displacement from minimum to maximum at any material throw angle.

These features combine to provide a precise means of adjusting retention time and flow rate variation. Adjustable weir height enables material bed depth.

- Two-Mass drive eliminates load dampening and significantly reduces horsepower requirements over brute force designs.
- Ability to use various heat sources/technologies to heat or dry materials.
- Chilled water coils available for cooling capacities.
- Heavy-duty construction eliminates maintenance headaches.
- Optional processing sections offer cooling, heating, drying, coating & more.
- Bed depth regulated via various weir heights.
- Multi-zone processing available.
- Custom engineered specifically to meet your process requirements and broad range of capacities from a few pounds to several tons - in trough widths from 12" to 72" and lengths up to 50 ft.
- All process applications established by lab or field tests.

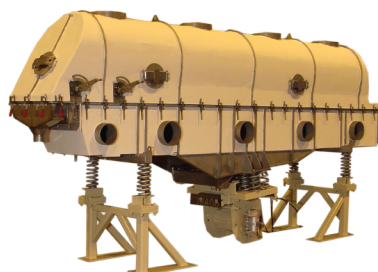
CAD Drawings



Specs

Function:	Drying, Heating, and / or cooling, coating
Components:	Electric Motors, Isolation Springs, Reactor Springs, Steel Construction
Construction Material:	Abrasion Resistant Steel, Mild Steel, Stainless Steel, Aluminum, Ceramic, coatings
Power Requirements:	1 HP to 30 HP
Width:	12" to 120"
Length:	Up to 50 ft
Weight:	Size Dependent
Capacity:	Application Dependent
Analysis:	FEA
Finish:	Materials of construction dependent
Production Volume:	Built to Order, Standard Sizes Available
Benefits:	Efficient, Low Maintenance, Reliable, Rugged, Safe Operation, Low Drive HP
Secondary Services:	Customer Support, Field Service, Additional Features
Quality:	ISO Certified
Applications:	Food, powder, chemicals, rubber, polymers, and aggregates

Application Photos



General Kinematics engineers, manufactures and installs a wide range of vibratory, rotary and process equipment. GK equipment is custom engineered to your application. Our mission is to not only provide a solution that works, but also to supply superior after market parts and service to our customers around the world.

Spec Sheet No. GKP-01.

Printed in the USA. Copyright © General Kinematics