

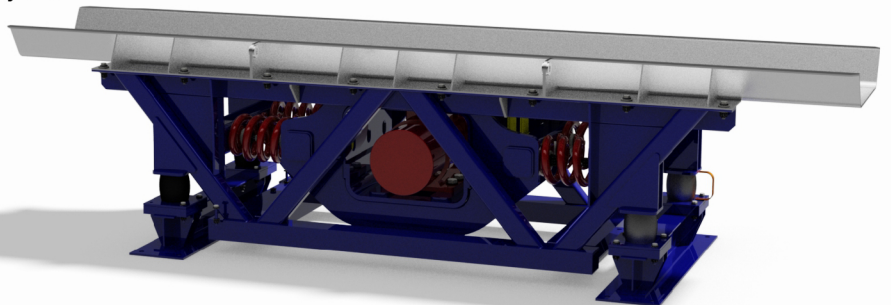
TWO-WAY™ Feeder

Convenient & reliable Feeders

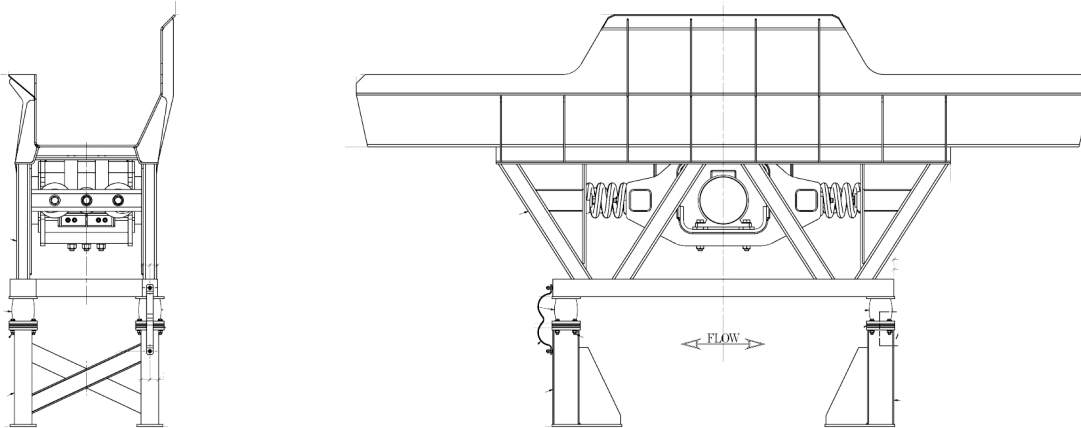
TWO-WAY™ Feeders from General Kinematics open up a wide range of process possibilities. This Feeder's bi-directional conveyance allows you to alternate material flow for multi-directional product processing, for rejection of bad product, or any other process which may require multi-directional conveyance from a single unit. The unit's horizontal stroke shuffles material with no impact and a significant reduction in noise. Available in straight and bi-directional curved designs.

TWO-WAY™ Overview

- Available in straight and curved configurations.
- Stainless or carbon steel construction depending on your application.
- Horizontal motion provides noise reduction.
- Bi-directional design allows for left or right conveyance adjustment in process.
- Applications include: foods, aggregate, powder, and more



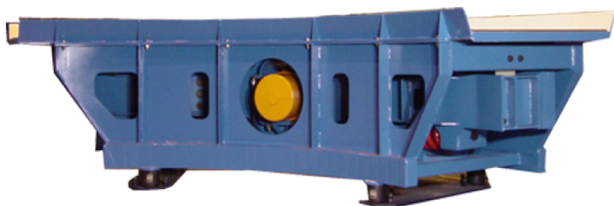
CAD Drawings



Specs

Function:	Heavy duty bi-directional feeders
Components:	Electric Motors, Isolation Springs, Reactor Springs, Steel Construction, Screens, Liners
Construction Material:	Abrasion Resistant Steel, Mild Steel, Rubber, Stainless Steel, Aluminum, Ceramic
Power Requirements:	Up to 60 hp
Width:	18", 24", 30", 36", 42", 48", 60", 72"
Length:	Up to 30 ft
Weight:	Length Dependent
Capacity:	Up to 300 tph
Analysis:	Fatigue, FEA, Stress
Finish:	2B, Bead Blasted, Epoxy, Galvanized, Painted
Production Volume:	Built to Order, Standard Sizes Available
Benefits:	Efficient, Low Maintenance, Reliable, Rugged, Safe Operation
Secondary Services:	Customer Support, Field Service, Additional Features
Quality:	ISO Certified

Application Photos



90 Degree Curve Two-Way Feeder



Two-Way Low Profile

General Kinematics engineers, manufactures and installs a wide range of vibratory, rotary and process equipment. GK equipment is custom engineered to your application. Our mission is to not only provide a solution that works, but also to supply superior after market parts and service to our customers around the world.

Spec Sheet No. GKP-15.

Printed in the USA. Copyright ©2018 General Kinematics