



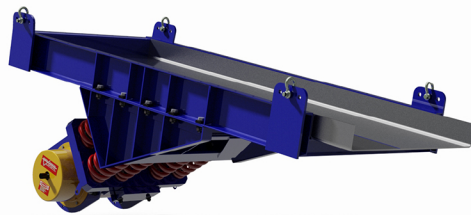
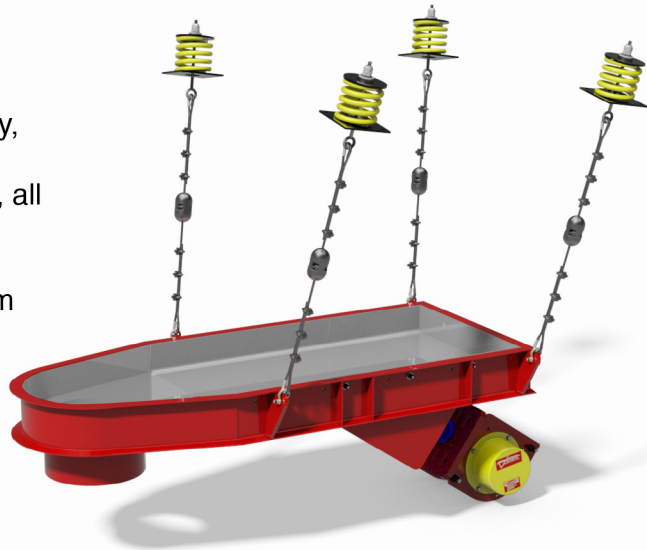
PARA-MOUNT II®

TWO-MASS VIBRATORY CRUSHER FEEDERS

Increased throughput and load responsive design are just two of the many advantages you will find when switching to General Kinematics PARA-MOUNT II® vibratory crusher feeders.

Utilizing GK's proven Two-Mass drive technology, the PARA-MOUNT II® requires up to 2/3rds less energy than traditional feeders of the same size, all while moving and metering MORE material.

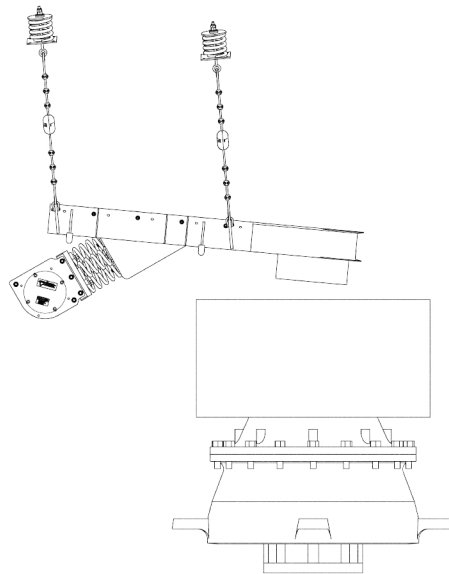
GK feeders are available in standard and custom sizes to best fit your application.



FEATURES:

- Optional spout or feeder end.
- Standard or customizable sizing.
- Load responsive Two-Mass Design.

PARA-MOUNT II® CAD Example



► PARA-MOUNT II® Vibratory Crusher Feeder Sizes

Model	Motor HP.	Width (In.)	Length (In.)	Approx. Weight (Lbs.)
30-7	2	30	84	1800
36-7	2	36	84	2150
42-7	2	42	84	2200
42-8	3	42	96	2700
48-7	3	48	84	2800
48-8	3	48	96	2900
54-8	5	54	96	3600
60-8	5	60	96	4400

Installation & Application



General Kinematics engineers, manufactures and installs a wide range of vibratory, rotary and process equipment. GK equipment is custom engineered to your application. Our mission is to not only provide a solution that works, but also to supply superior after market parts and service to our customers around the world.