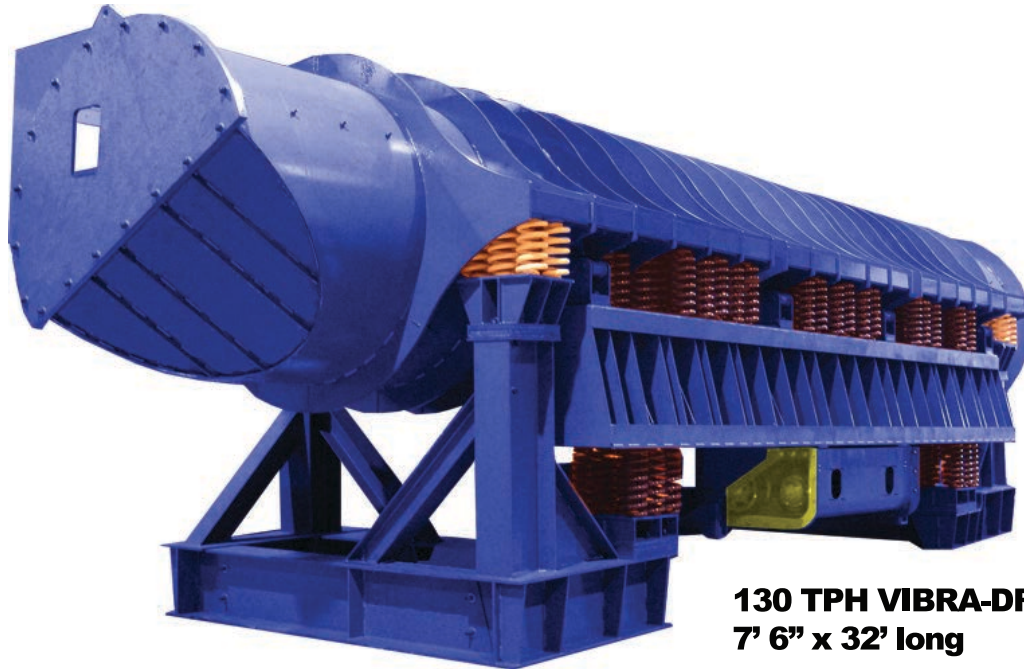




VIBRA-DRUM®
Sand and Casting Processors



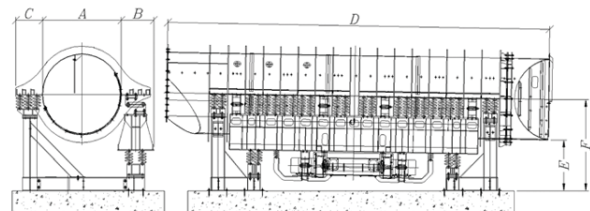
130 TPH VIBRA-DRUM®
7' 6" x 32' long

Casting Cooling Gentle Shakeout Sand Conditioning

Proven in hundreds of applications worldwide, VIBRA-DRUM® Sand and Casting Processors have revolutionized high volume mold/sand handling for foundry applications. This versatile Two-Mass system reduces sand lumps to original grain size and quickly equalizes shakeout sand temperatures without damaging castings - all in one continuous, energy-efficient operation.

Two-Mass vibrating drums deliver high capacity up to 400 TPH, plus superior material motion for efficient sand and casting conditioning and cooling. Natural frequency vibration produces a beneficial drum-like rotary motion that quickly reduces sand lumps without casting damage. High frequency agitation efficiently reduces sand to grain size.

Put it all together and you have a simple, easy-to-maintain, non-rotating design with all the environmental benefits of a totally enclosed drum — air handling, seals and all interface connections are to non-rotating locations, allowing for moisture addition and ventilation throughout the drum. Our design simplifies the installation of feed and discharge systems and facilitates in-process inspection.



Follow GK on Twitter | Facebook | LinkedIn | YouTube | GK Blog
USA | Germany | United Kingdom | China | India | Thailand

Call 815 - 455 - 3222
or visit www.gkfoundry.com



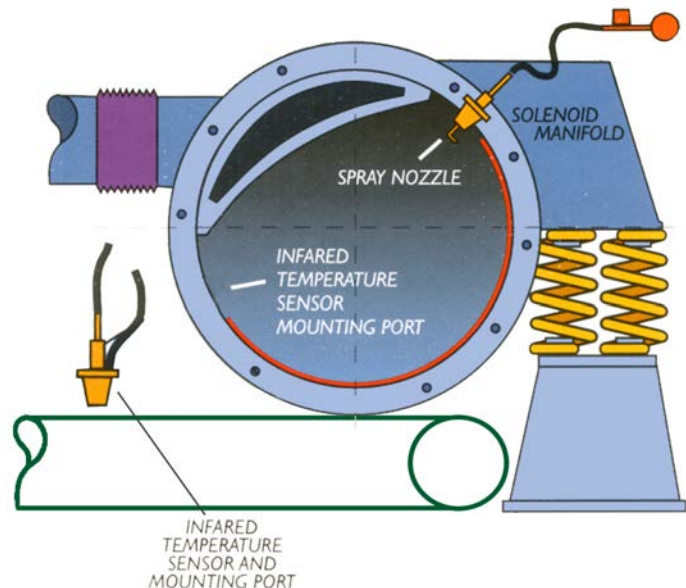
VIBRA-DRUM® Sand and Casting Processors

Automatic, efficient conditioning for foundry sand

General Kinematics SPRAYCOOL™ Water Addition Systems are designed for precise in-process conditioning of foundry sand—not achievable in rotary or other technologies. SPRAYCOOL™ improves the efficiency of evaporative cooling systems, and automatically adjusts water addition and blending rates to preset parameters. Custom engineered systems include all components and remote controls for state-of-the-art, non-contact temperature and weigh sensing.

- Water pressure regulating valve with integral strainer maintains constant nozzle pressure and precise flow rates.
- Automatic air purge of infrared temperature sensors minimizes dust build up, assures consistent readings and process control.
- Manual valves for easy service of strainer and optional booster pump.
- Feedback sensor automatically adjusts and maintains preset sand discharge temperature.

Typical VIBRA-DRUM® water additional system



VIBRA-DRUM® Installations



General Kinematics partners with our customers to provide vibratory equipment that improves their throughput, increases their profitability, and reduces maintenance costs. The employees of GK genuinely want our customers to be successful in their businesses, and will do all they can to provide equipment and solutions to do so.

Brochure No. GKF-03. Printed in the USA. Copyright General Kinematics

Follow GK on Twitter | Facebook | LinkedIn | YouTube | GK Blog
USA | Germany | United Kingdom | China | India | Thailand

Call 815 - 455 - 3222
or visit www.gkfoundry.com